

# ***murphy*** ***specialty, inc.***

**158 Arlington St.  
Boston, MA 02136**

**Tel. # 617-361-3242**

**[www.murphyspecialty.com](http://www.murphyspecialty.com)**

**Trash / Recycle / Linen Chutes  
Trash Compactors  
Recycling Systems, Trash Lifts**

---

***Over 40 years of Dependable Service***

**We understand that the secret to our success is our employees,  
commitment to quality, healthy and safe working environments,  
personal attention to details, family values, and your satisfaction.**

**Please take some time to review our brochure.**

**If you need references,  
or information regarding our capabilities,  
please give us a call.**

---

**All Chutes Manufactured in the U.S.A.,  
using > 80 % recycled materials.**

**Meets: NFPA 82**

**UL Listed  
Electric Interlocks  
Pneumatic Operators  
Hands Free Operation  
Lever Handles with 5 lb pull**

**Sales, Service, Installations, Design, Engineering, Repairs, Doors,  
Hardware, Replacement Parts,  
Containers, Maintenance, Testing, and Cleaning**



**Compactors and Containers, Repairing Offsets,  
Installing / Repairing Discharge Doors and Intake Doors,  
Waste Caddies,  
UL Listed, B Label approved,  
Conforming to the guidelines of NFPA 82**



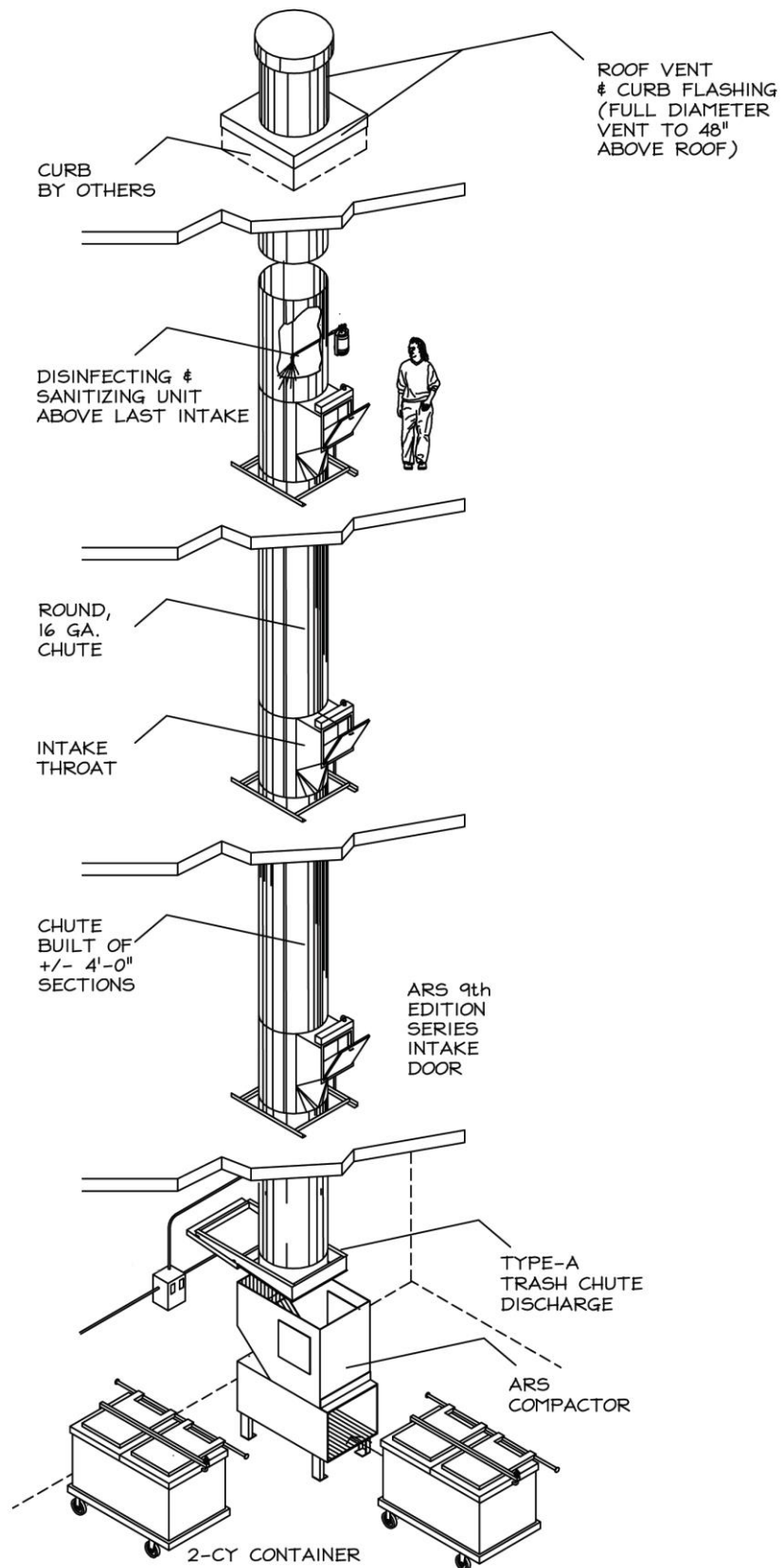
**Intake Doors**



**Discharge Doors above Trash Compactors.**

**Door held open with UL Listed Fusible Link.**

**Fusible Link rated for 165 Degrees F.**



**TYPICAL TRASH CHUTE LAYOUT**



## *Custom Metal Fabrication*

**Stainless Steel  
Copper  
Galvanized  
Aluminized  
Aluminum  
Black Iron  
Galvaneal**



**Electrical Interlock Control Panel – Locks out Chute Doors**



**Chute Vent – 4' above roof line**









**Compactor / Recycle System's hydraulic control panel**





**Chute's Discharge Fire door with UL listed Fusible link per NFPA 82**



**In the Old Days...The Trash would be burnt. We are brought in to Upgrade Old Incinerator Doors.**



**Existing Concrete Incinerator converted with new  
UL Listed Chute Doors. ( Self Closing and Positive Latching ).**





**T Handle**



**Through Wall - Chute door and sleeve**



**Sprinkler Heads installed in Chute ready for piping**

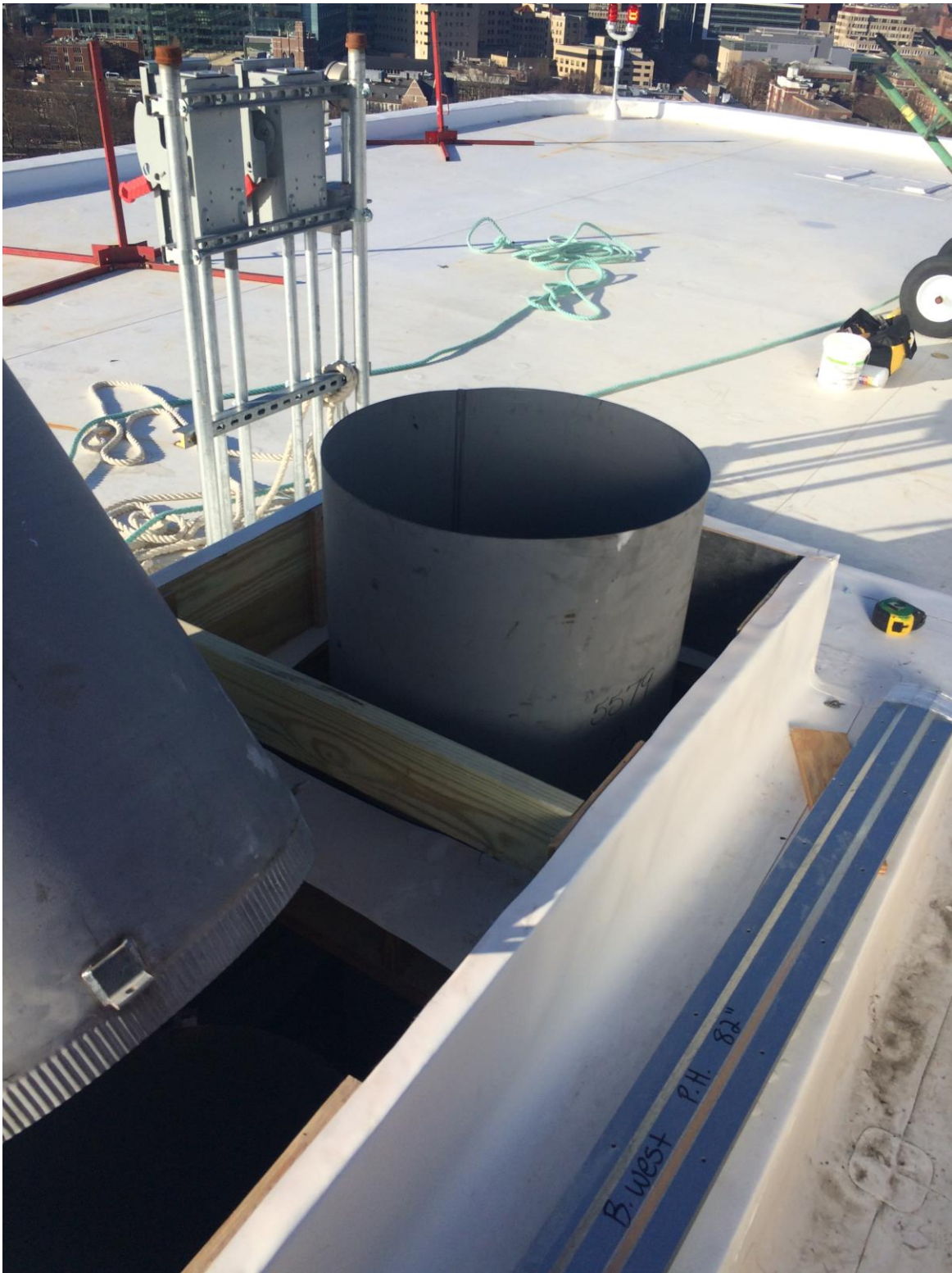


**New Chute door flush with CMU wall / shaft. Lockable T Handle**



**Chute / Roof Vent /Curb Flashing**

**Metal Insulated Roof Curb**





## **Double Chute Vent Cap**

**( 1 Trash and 1 Recycle )**

**Must vent through the roof per NFPA 82**

**Ratchet Binder ( Holds Container to Compactor )**

**Compactor's Service Door**



**Trash Compactor's Power Unit**

**Trash Compactor**

**2 Yard metal rolling  
"FRONT" Load Trash Container**



**Hydraulic Lift – which raises a Trash Container from ground level to the loading dock.**



**Hydraulic Lift – which raises a Trash Container from ground level to the loading dock.**





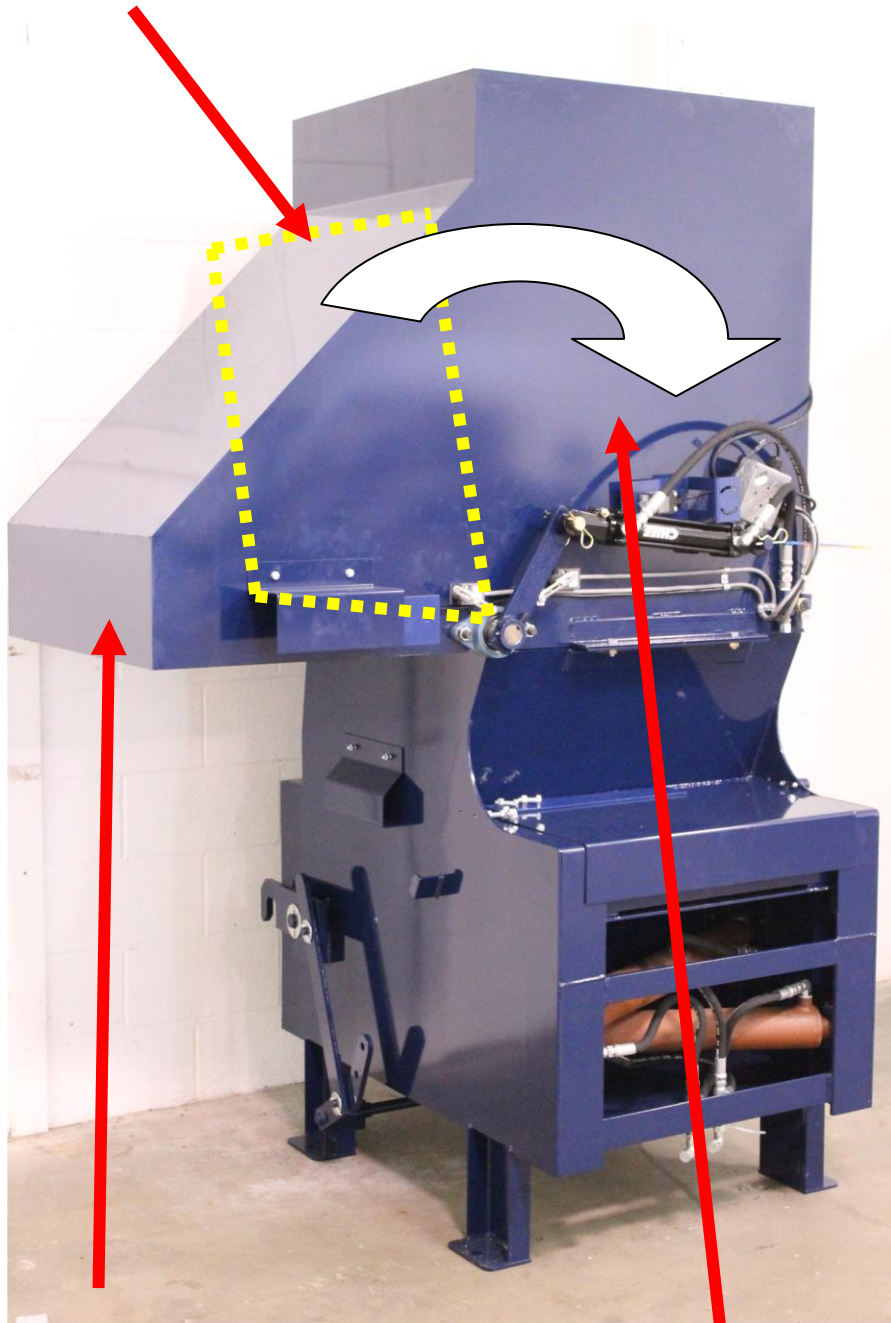




**“Front” Loading Trash Container**

*SAMPLE PHOTO ( BISORT shown in Trash mode )*

*Internal moving plate which moves when the Trash or Recycle button is pushed at each floor*



**Single Stream Recyclables drop into this chamber**

**Trash drops into this chamber**

## **SAMPLE PHOTOS**



**RECYCLE 1**



**TRASH**



**OPEN DOOR**



**Compactor/Diverter Control**



**“Rear” Loading  
Trash  
Container**





MURPHY Specialties 10/8/15

**CAUTION**  
Read user guide  
before operating

**DANGER**  
This equipment  
starts and stops  
automatically

**DANGER**  
High pressure  
hydraulic hoses  
Keep away

**DANGER**  
This equipment  
starts and stops  
automatically

**DANGER**  
Prevent serious  
injury or death  
from pinching  
Keep all persons  
and objects  
clear  
While any part  
of this machine  
is in motion

**DANGER**  
Keep hands  
out of  
machinery

**DANGER**  
This equipment  
starts and stops  
automatically

**DANGER**  
High pressure  
hydraulic hoses  
Keep away



**BI-Sort ( Compactor and Recycle System )**



**BI SORT**

**Chute's Intake Doors**

OPERATION OF DOORS: THE RESIDENT PUSHES THE "BLUE" BUTTON FOR TRASH, OR "GREEN" BUTTON FOR RECYCLE. ONCE THE SELECTED BUTTON REMAINS LIT, THE RESIDENT CAN PUSH THE "RED" BUTTON TO UNLOCK THE DOOR. NOTE: ALL RECYCLABLES ARE SINGLE STREAM / COMMINGLED. AFTER +/- 10 SECONDS, THE SYSTEM DEFAULTS BACK TO THE "BLUE" BUTTON. IF ANY DOOR IS OPENED, ALL OTHER DOORS IN THE CHUTE REMAIN LOCKED.



## **BI-SORT Door Operation**



**Chute's Discharge Fire Door**

**held open by a UL Listed fusible link rated for 165F**

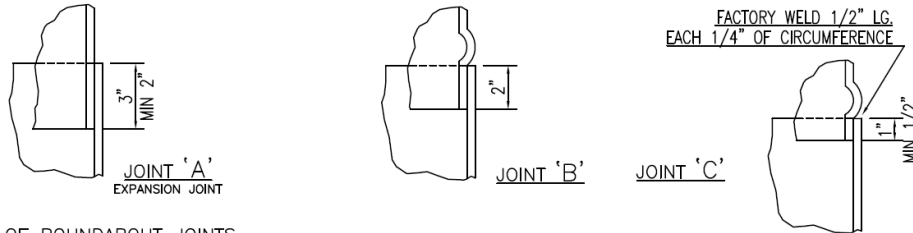


**Handle which connects the Trash Container to the Compactor**

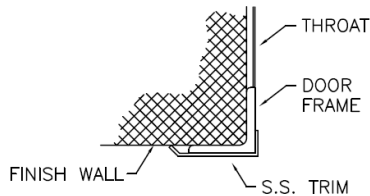
# Soiled Line Chute

## sample shop drawings

CIRCLED ITEMS ARE FURNISHED		GENERAL NOTES	
		<p>ALL CHUTE SOURCE, LLC Chutes are lockseamed, beaded and crimped. PARTITIONS AROUND CHUTES ARE NOT TO BE PLACED UNTIL CHUTES ARE INSTALLED. Cutting of floors or walls necessary to install chutes, and/or patching afterwards will be done by others.</p>	
①	QUANTITY 1	CHUTE:	⑤
		Fabricated of 16-Ga 304 STAINLESS STEEL Custom installations are made from standard parts. One Expansion Joint per floor. Flush interiors are free of bolts, rivets, or clips protruding into the chute opening. Standard Diameter = 24".	QUANTITY 1
②	QUANTITY 2	TYPICAL LINEN CHUTE INTAKE: W/ 'SOILED LINEN' TRIM	⑥
		Ninth Edition Series Door, 18"x 18", R.H. side hinged, hand operated, self-closing intake door with 22 ga. SS front & 18 ga Al-Stl door back. Certified to UL 10-B, Ninth Edition, with 250 deg F. max. temp. rise over 30 minutes. Uses Fire-Safe Latching System (Patent Pending) with enhanced latch bolt retention, and permanent retention during a fire scenario. Installation includes masonry or drywall anchors and SS trim.	QUANTITY 2
③	QUANTITY 1	TYPICAL LINEN CHUTE HOPPER TYPE DISCHARGE:	⑦
		Ninth Edition Series Door, 24" wide x 30" high top hinged, with 165 deg F. fusible linked hold open spring. SS 22ga front & 18 ga Al-Stl door back. Certified to UL 10-B, Ninth Edition with 250 deg max. temp. rise over 30 min. Uses two horizontal door latches per opening. Door comes with 90 deg hopper discharge including 2" IPS drain flange for connection by others and adjustable pedestal support. Installation includes masonry & drywall anchors.	QUANTITY 1
④	QUANTITY 1	FLOOR SUPPORT:	⑧
		Chute support clips provided at each floor are factory pre-positioned to assure proper chute alignment. Structural frame fabricated of 1-1/2" x 1-1/2" x 3/16" angles at each floor. Optional Isolator pads are _____ are not <input checked="" type="checkbox"/> provided.	QUANTITY 1
			⑨
			QUANTITY 1
			⑩
			QUANTITY
			⑪
			QUANTITY



DETAILS OF ROUNDABOUT JOINTS



DOOR FRAME/WALL INTERSECTION

THESE DRAWINGS ARE THE PROPRIETARY PROPERTY OF CHUTE SOURCE, LLC

THEY ARE BASED UPON PATENT/PATENT PENDING PRODUCTS OWNED/LICENSED BY CHUTE SOURCE, LLC.

THIS DOCUMENT IS PROVIDED ON THE CONDITION THAT IT CANNOT BE REPRODUCED, COPIED, OR OTHERWISE UTILIZED, IN WHOLE OR IN PART, FOR THE MANUFACTURE OF PARTS OR FOR USES OTHER THAN SHOP DRAWINGS. ACCEPTING THIS DOCUMENT IS AN ACCEPTANCE OF THESE CONDITIONS AND RECOGNITION OF THE EXCLUSIVE PROPERTY RIGHTS HELD SOLELY BY CHUTE SOURCE, LLC

### FOR SHOP FABRICATION

INSPECTIONS		REVISIONS	
ITEM	BY	DATE	INT
Throat Length		10/3/12	MC
Door Swing		10/16/12	MC
Story Heights			
Floor Clips			
Vent Pipe			
Sprinkler			
Floor Frames			
Flush Spray			

Packed & Shipped by

STONE INSTITUTE ELDER  
LINEN CHUTE  
NEWTON UPPER FALLS, MA

1 of 2

DISTRIBUTOR: MURPHY SPECIALTY, INC.  
DIST. CONTACT: JOHN HARDIMAN

DIST. CONTACT #: 617-361-3242

DIST. WEB: www.murphyspecialty.com

DRAWING #: Q100212002

CHUTE SOURCE, LLC

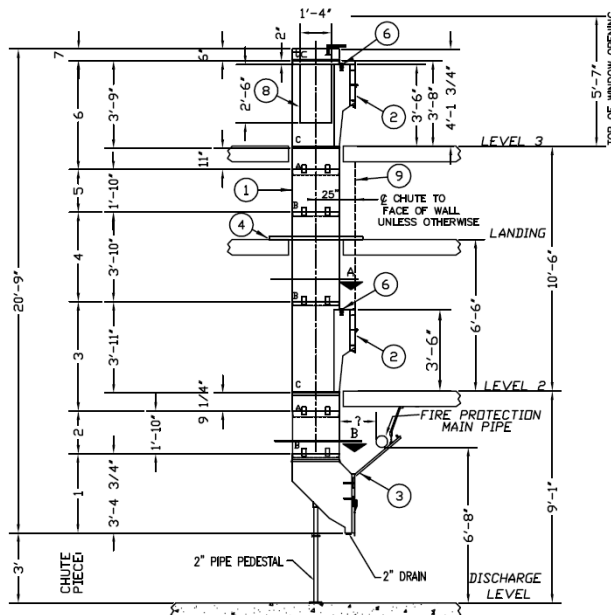
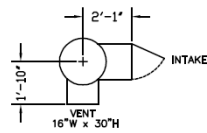
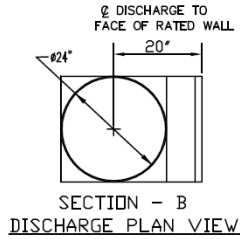
525 KENNEDY ROAD  
AKRON, OHIO 44305  
P: 330.733.3996 F: 330.733.4552

DWG: STONE INSTITUTE ELDER, MA

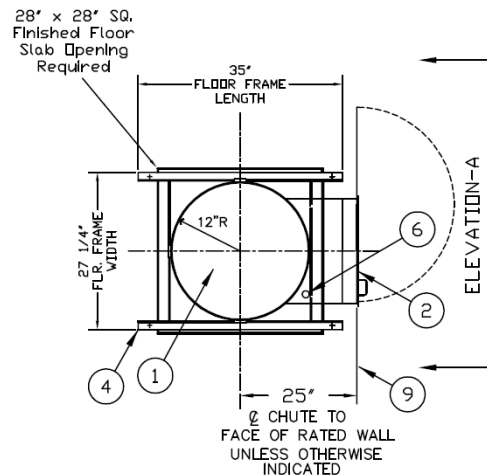
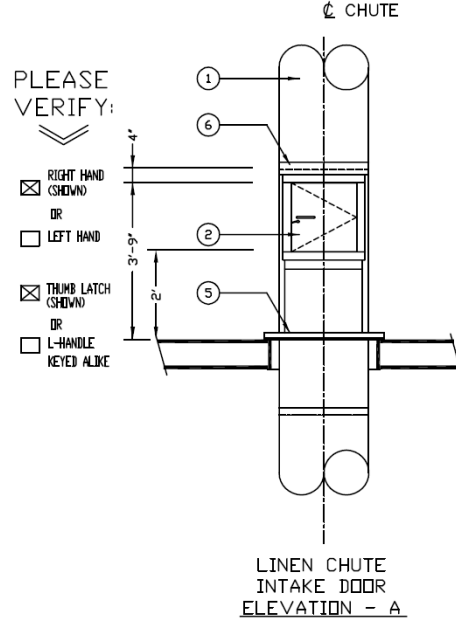
BY: MC

# Soiled Line Chute

sample shop drawings



CHUTE ELEVATION VIEW  
ONE 24" DIAMETER LINEN CHUTE  
(2) TWO INTAKE DOORS



SECTION - A  
INTAKE PLAN VIEW

FOR SHOP FABRICATION					STONE INSTITUTE ELDER LINEN CHUTE NEWTON UPPER FALLS, MA		2 of 2
					DISTRIBUTOR: MURPHY SPECIALTY, INC.		
					DIST. CONTACT: JOHN HARDIMAN		
					DIST. CONTACT #: 617-361-3242		
					DIST. WEB: www.murphyspecialty.com		
					DRAWING #: Q100212002		
					CHUTE SOURCE, LLC		
					525 KENNEDY ROAD AKRON, OHIO 44305		
					P: 330.733.3996 F: 330.733.4552		
Packed & Shipped by					DWG: STONE INSTITUTE ELDER, MA		BY: MC



**Linen Chute collapsed inside CMU wall**

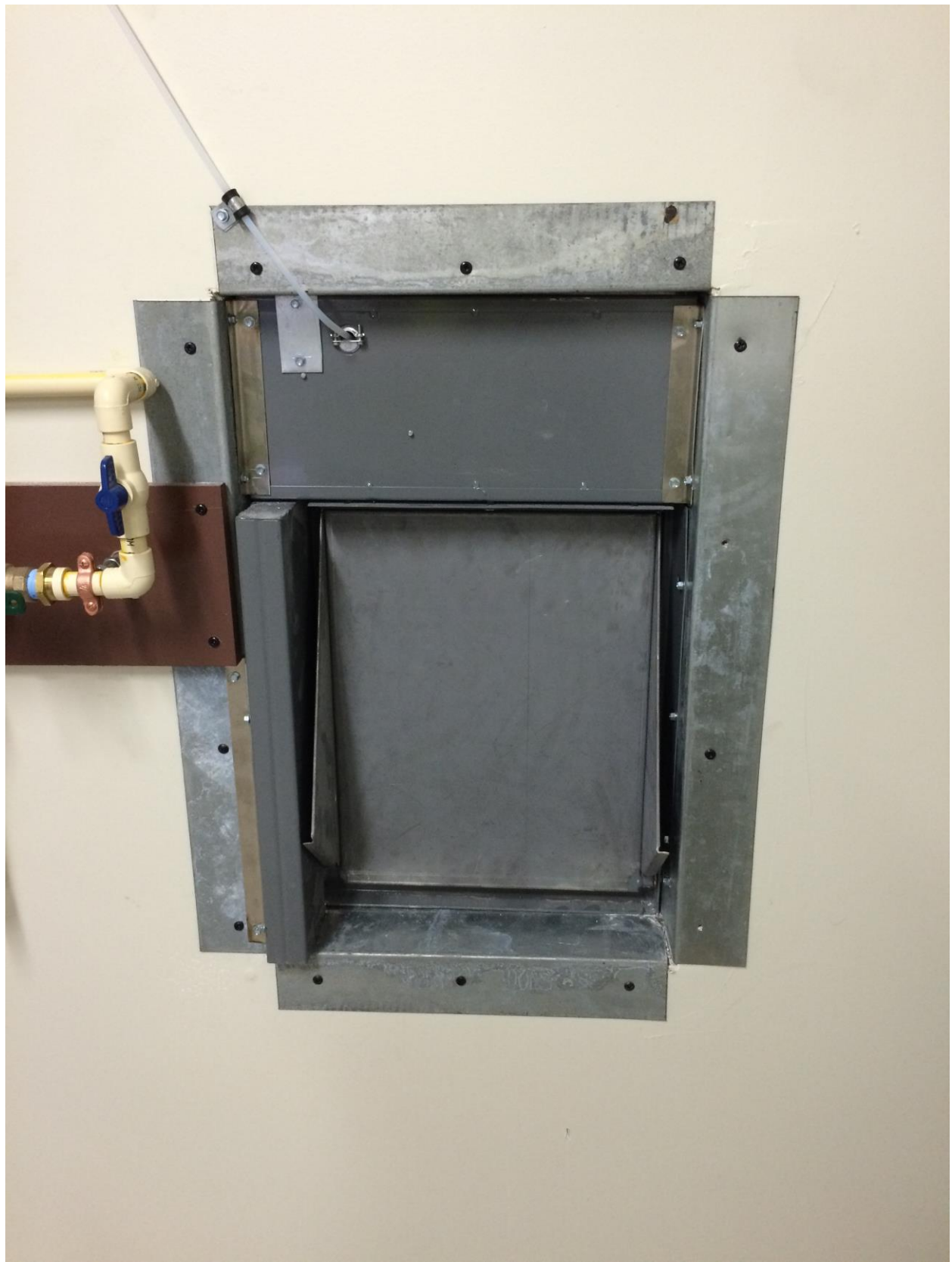




**Murphy Specialty, Inc. made the emergency repairs to get the  
Hotel up and running.**



**Pneumatically / Palm button  
operated doors with keyed LEVER handles**







**Air compressor used for the door operation**

# **“Front Load” Trash Container**



# **“Front Load”** Trash Container

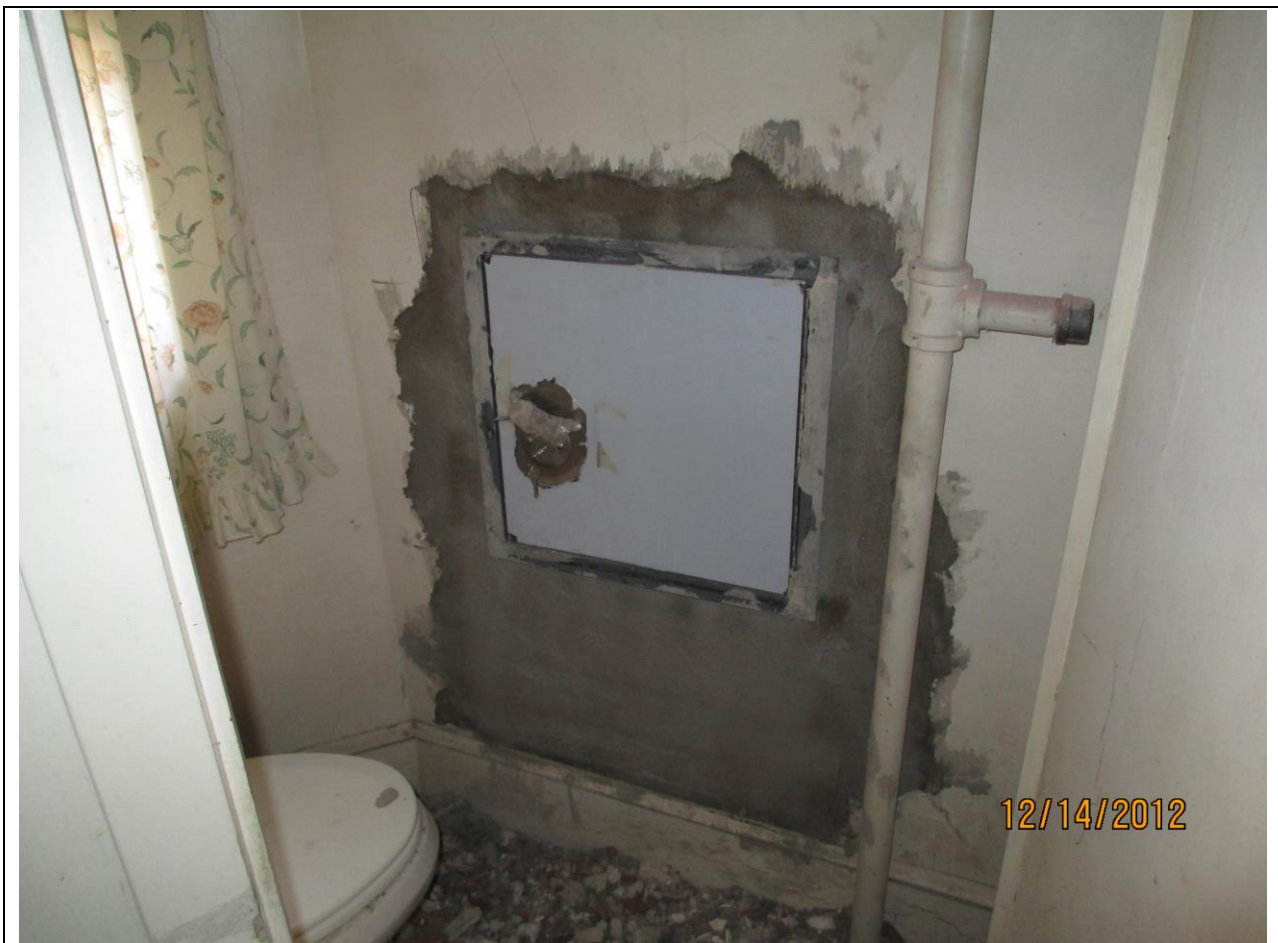


**“Rear Load”**  
**Trash Container**





**Laundry Chute vent on pitched slate roof**



**New stainless steel linen chute  
installed in existing assisted nursing home**





**New UL Listed discharge “hopper” style door  
at bottom of soiled linen chute**



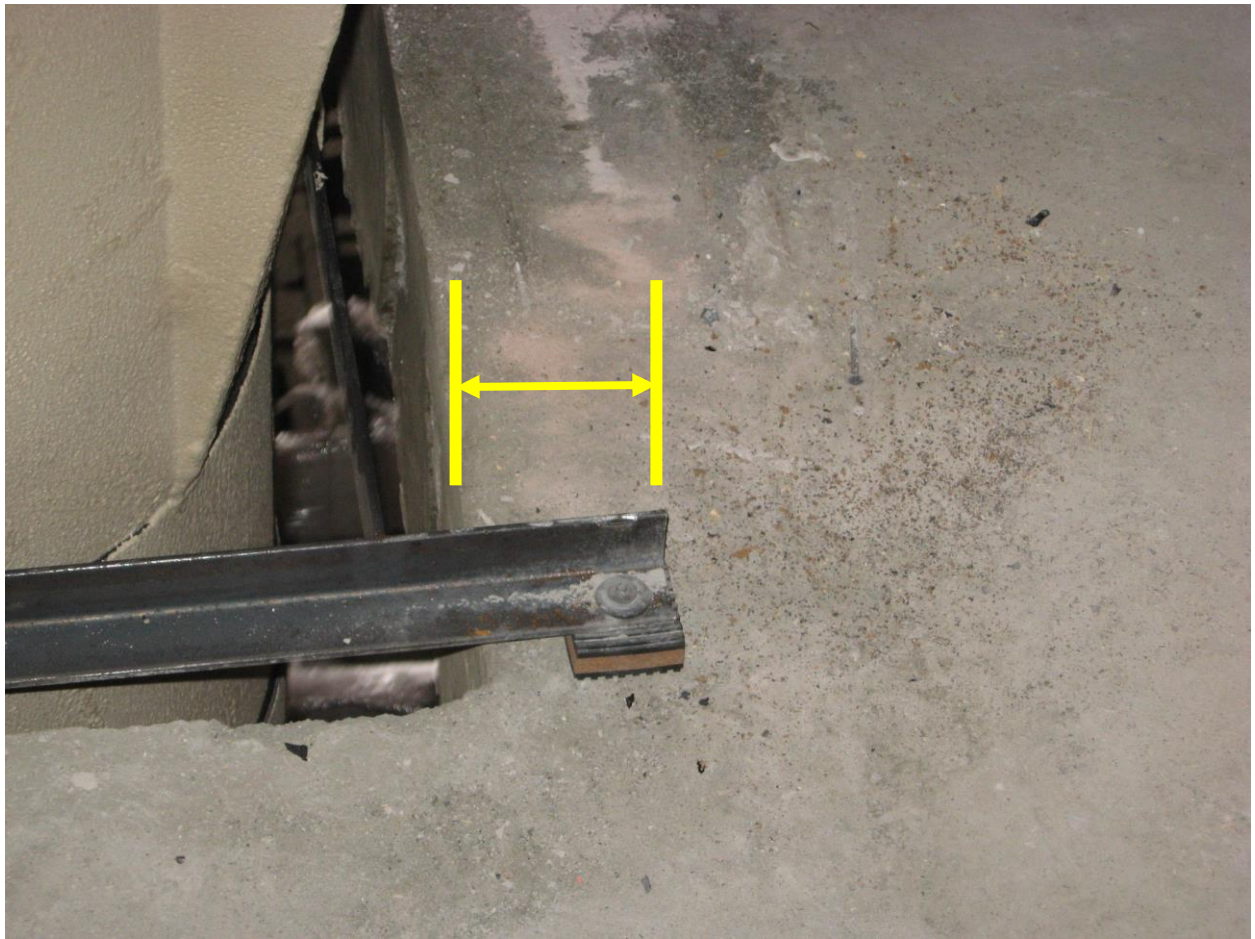
**New Sprinkler heads installed at the first floor intake door, the top floor intake, and every alternating floor in between.**



**Chute needs to be supported with steel floor frames at all levels.**

**Chute doors can be rotated:**

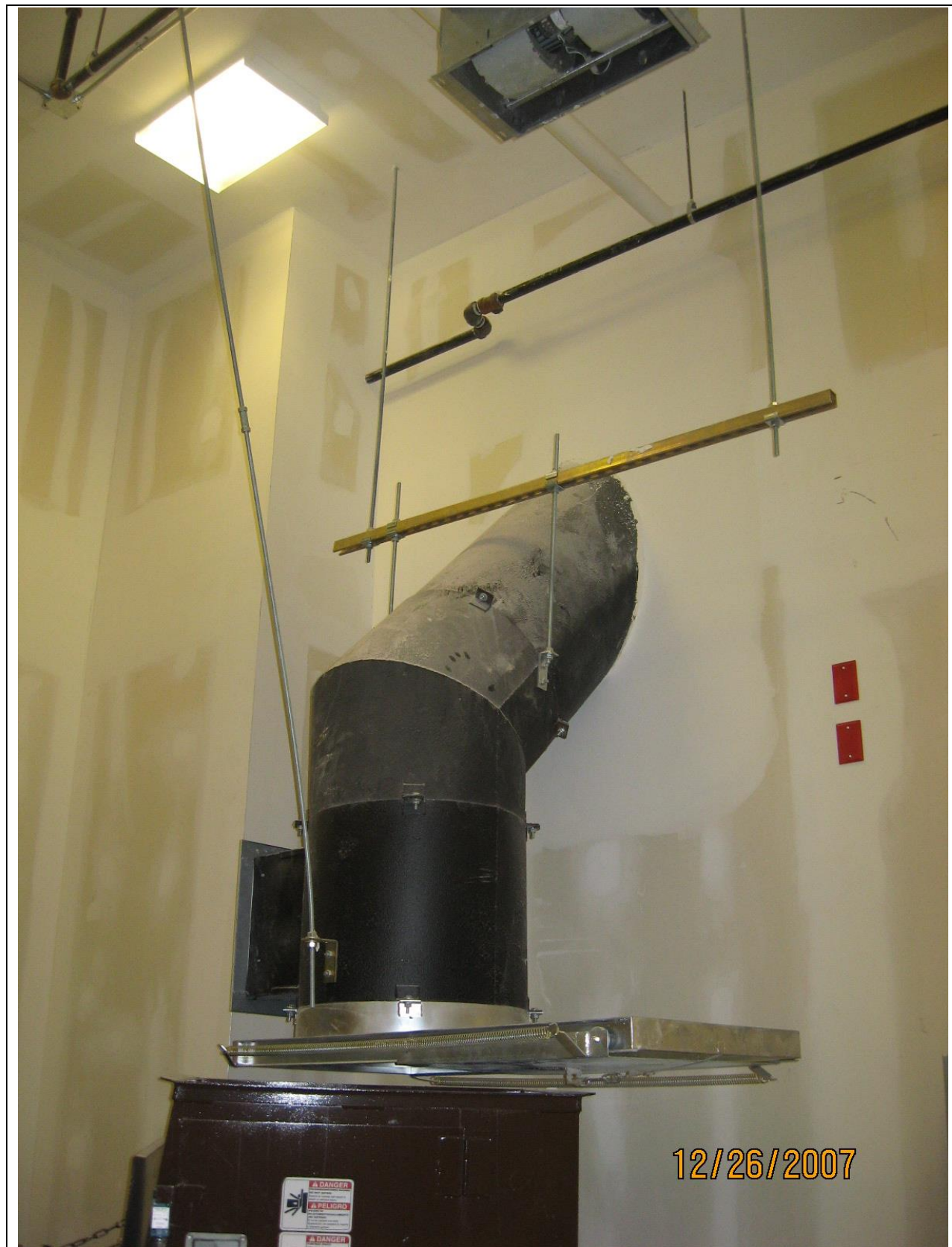
**North  
South  
East  
West**



**Steel floor frames need to sit on the floor slab by at least 2”.**



**Typical floor opening is 28" x 28"**



12/26/2007



## **2 Chute System**

**1 Trash Chute**

**1 Recycle Chute**





**" Murphy Specialty's employees always  
get the job done right the first time, with  
quick response when we need them! "**

## **Sheraton Hotel - Boston**

**We have successfully completed Safety course training requirements for:**

10 Hour OSHA  
30 Hour OSHA  
Hoisting and Rigging  
Signaling  
Confined Space Entry  
HVAC Fire Life Safety  
Source Capture Fume Removal Systems  
Air Filtration Systems  
Primary Access Training – Frame  
Boom Lift  
Fall Protection  
MBTA Right of Way

**Licenses / Certifications**

**MA CS License # 56479**  
**MA Master Sheet Metal License # 133**  
**RI Sheet Metal Master License # 7613**  
**MA HIC Registration # 155621**  
**TABB / ICB - Fire Life Safety**  
**Diesel / Gas Exhaust Fume Removal**  
**Air Filtration**  
**Fire / Smoke Damper Testing**



Murphy Specialty Inc. <info@murphyspecialty.com>

---

## Chute doors

---

Hopkins, Thomas (DPS) <Thomas.Hopkins@massmail.state.ma.us>

Fri, Mar 18, 2016 at 3:12 PM

To: "Murphy Specialty Inc." <paulh@murphyspecialty.com>

Cc: "Sutton, Kate (DPS)" <kate.sutton@state.ma.us>

Mr. Hardiman,

On Monday March 7, 2016 the Architectural Access Board reviewed the sample display that you delivered to the Boards offices for review and the material you submitted on February 3, 2016 via e-mail. After careful review the Board determined that the "T" handle would not be an acceptable handle due to the fact that it requires twisting of the wrist to operate. The lever handle was found to be well within the requirements of 521 CMR. See draft minutes from the discussion below.

18) Advisory Opinion: Trash/Recycling Chutes, (521 CMR 39), Lovejoy Wharf, Boston

TH - EXHIBIT – submittal from Paul Hardiman of Murphy Specialty, Inc, via a February 3, 2016 e-mail

- T-handle vs. Lever handle (also shown in the mounted demonstration sample)

JD - *motion to approve the use of a lever handle, and not allow the use of the T-handle, as it is not compliant*

*with 521 CMR 39.5 which states, see below:*

DM - *second - carries unanimously*

### 39.5 OPERATION

Controls and operating mechanisms shall be operable with one hand and shall not require tight grasping, pinching, or twisting of the wrist. The force required to activate controls shall be no greater than five lbs.

Please call if you have any questions.

Thomas P. Hopkins

Executive Director

Architectural Access Board

617-727-0660

[www.mass.gov/dps](http://www.mass.gov/dps)

**From:** [info@murphyspecialty.com](mailto:info@murphyspecialty.com) [mailto:[info@murphyspecialty.com](mailto:info@murphyspecialty.com)] **On Behalf Of** Murphy Specialty Inc.

**Sent:** Wednesday, March 16, 2016 3:42 PM

**To:** Hopkins, Thomas (DPS)

**Cc:** Kennedy, Edward M. (DCP); Sullivan, David (DPS); Joyce, William (DPS)

**Subject:** Re: Chute doors

[Quoted text hidden]

**Trash or Recycle Chute Door**  
with Lockable Lever handle and 5 lb. pull force to open



T Handle

Lever handle



**murphy**  
specialty, inc.

158 Arlington St.  
Boston, MA 02136

Tel. # 617-361-3242

[www.murphyspecialty.com](http://www.murphyspecialty.com)